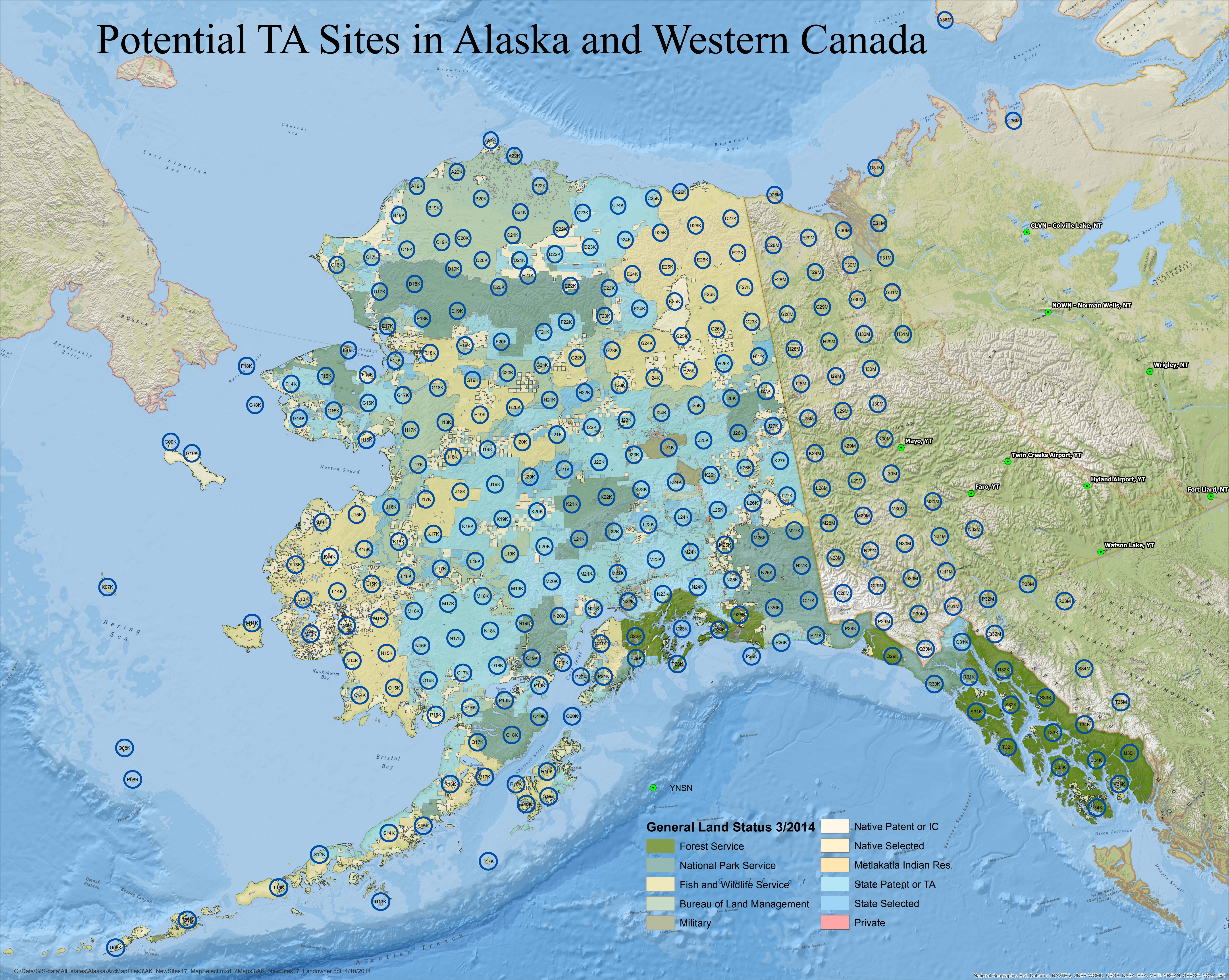


Potential TA Sites in Alaska and Western Canada



General Land Status 3/2014

- | | |
|--|---|
| Forest Service | Native Patent or IC |
| National Park Service | Native Selected |
| Fish and Wildlife Service | Metlakatla Indian Res. |
| Bureau of Land Management | State Patent or TA |
| Military | State Selected |
| | Private |